

DeLaet's Landing



*An exciting new waterfront community on the banks of the Hudson River
with stunning views of the Albany skyline*



MARX
PROPERTIES, INC.

DeLaet's Landing

An exciting new waterfront community on the banks of the Hudson River with stunning views of the Albany skyline

New York State's Capital Region *Albany - Rensselaer, NY*

Located 150 miles north of New York City along the Hudson River, Albany, NY serves as the capital of New York State.

The region is the midway point between the Hudson Valley to the south and the Adirondack Mountains to the north.



*Albany, Capital City of New York State
View from Rensselaer, NY*



New York's historic Hudson Valley

CAPITAL REGION METRO AREA

BY THE NUMBERS

- 1.1 million Capital Region Metro Area population
- 21 Local Colleges & Universities
- 65,000 Combined Student Population

**2016 - U.S. News & World Report
ranked the Capital Region
3rd nationally in
'places to find a job in technology'.**

Khristopher Fitzgerald
(518) 598-8918

MARX
PROPERTIES, INC.
20 GURLEY AVENUE
TROY, NY 12182

www.delaets-landing.com

DeLaet's Landing

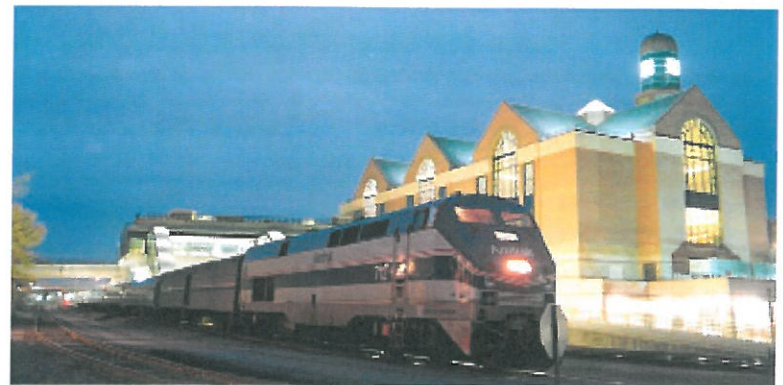
An exciting new waterfront community on the banks of the Hudson River with stunning views of the Albany skyline



DELAET'S LANDING

Close to Everything!

<u>Destination</u>	<u>Drive Time</u>
AMTRAK Station	2 min
NY State Capitol	5 min
Empire State Plaza	5 min
Times Union Center	5 min
Albany Capital Center	5 min
SUNY UAlbany Health Sciences Center	5 min
Albany International Airport	19 min
Saratoga Springs	35 min
Lake George & Adirondack Mountains	1 hr
New York City	2 hr 30 min
Boston	2 hr 45 min
Montreal	3 hr 45 min



Albany-Rensselaer AMTRAK Station
2,200+ "on-offs" per day at nation's 9th Busiest AMTRAK station



New York State Capitol, Albany



Khristopher Fitzgerald
(518) 598-8918

MARX
PROPERTIES, INC.
20 GURLEY AVENUE
TROY, NY 12182

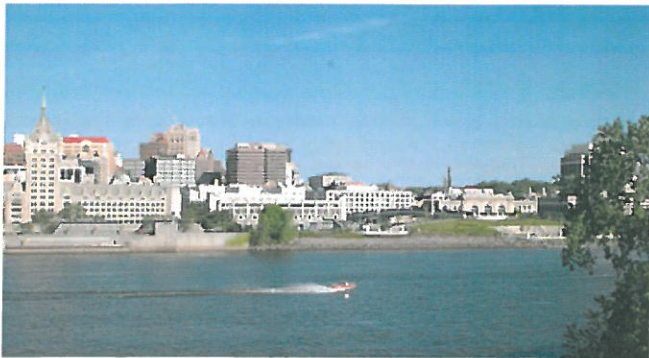
www.delaets-landing.com

DeLaet's Landing

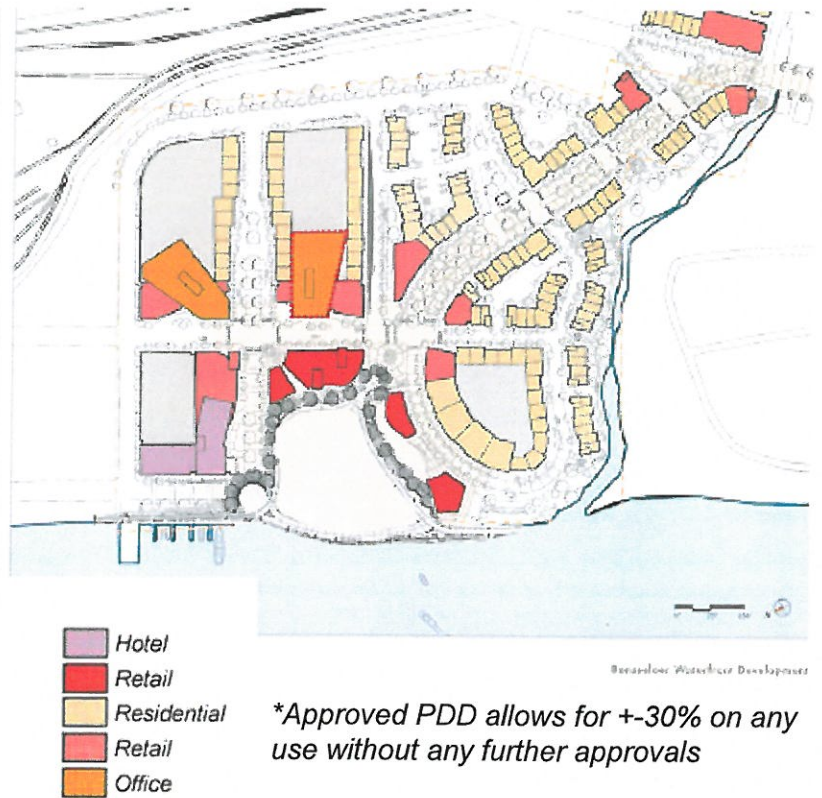
An exciting new waterfront community on the banks of the Hudson River with stunning views of the Albany skyline

A Fully-Approved 1.3 million square-foot Planned Development District

- Dramatic Albany, NY Cityscape Views
- Waterfront Build-to-Suit
 - 250,000 sf Prime Office space
 - 165,000 sf Retail spaces
 - 236,000 sf Hotel site
 - 630,000 sf Residential
 - Townhomes
 - Mid-rise lofts/condos
- Riverfront Esplanade



View of Albany from new Rensselaer Esplanade



 Marx Properties

*Approved PDD allows for +/-30% on any use without any further approvals



New Rensselaer Esplanade along the Hudson River at DeLaet's Landing

Khristopher Fitzgerald
(518) 598-8918

MARX
PROPERTIES, INC.
20 GURLEY AVENUE
TROY, NY 12182

www.delaets-landing.com

DeLaet's Landing

An exciting new waterfront community on the banks of the Hudson River with stunning views of the Albany skyline

The Apartments at De Laet's Landing

Located along the beautiful Hudson River, with stunning views of the Albany skyline, ***The Apartments at De Laet's Landing*** is a new 96-unit luxury apartment complex convenient to New York's State Capital.

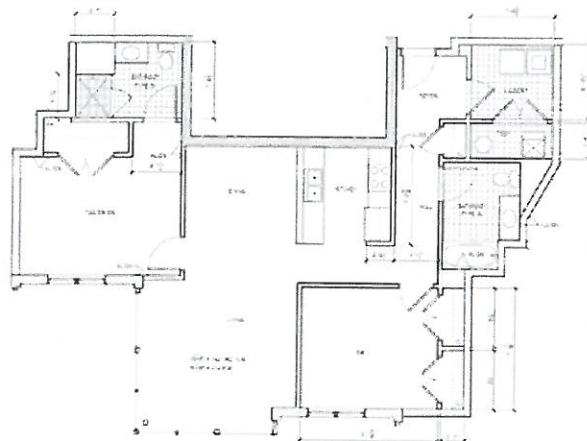
The Apartments at De Laet's Landing represents Phase I of the De Laet's Landing riverfront development project.

Now leasing!



Amenities

- Quartz Countertops
- Stainless Steel Appliances
- 9 Foot Ceilings
- Hardwood Style Floors
- Tiled Bathrooms
- Exercise Room
- Community Room
- Esplanade walkway along the river
- Acres of Active Green Space
- Pet Friendly Community with a Dog Wash Station
- Spectacular Views of the Hudson River & Albany Skyline



Kristopher Fitzgerald
(518) 598-8918

MARX
PROPERTIES, INC.

20 GURLEY AVENUE
TROY, NY 12182

www.delaets-landing.com

